



Provided by:



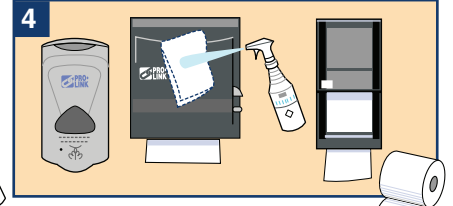
**1** Gather equipment. Prepare area. Place "Restroom Closed" sign at the door.



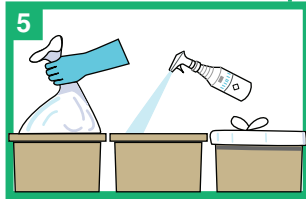
**2** Wear proper personal protective equipment.



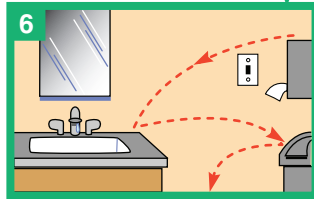
**3** Spray inside and outside of toilets. Don't flush. Allow time for the disinfectant to work.



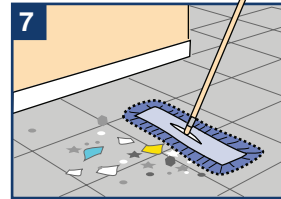
**4** Refill supplies and clean all dispensers.



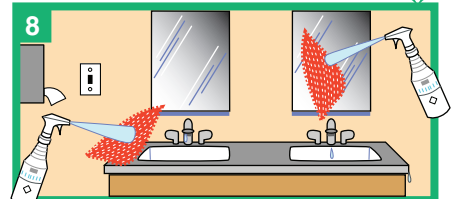
**5** Remove trash, disinfect trash can and replace liners.



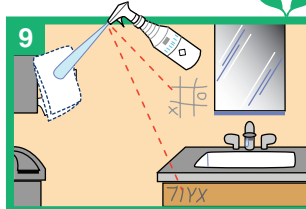
**6** Dust from top to bottom; pick up trash as you go.



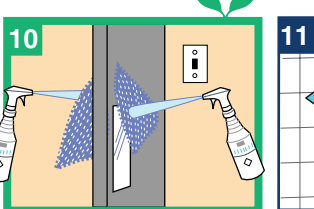
**7** Dust mop the floor.



**8** Spray and wipe sinks, counters and mirrors. Allow disinfectant to dwell.



**9** Remove graffiti and disinfect all high touch surfaces.



**10** Clean both sides of the entrance doors with a disinfectant.



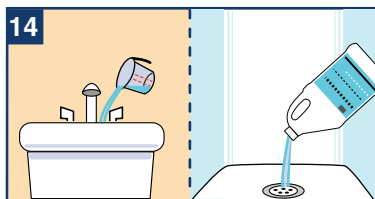
**11** Use bowl mop as a plunger to remove excess water. Scrub inside of toilets. Flush.



**12** Wipe outside of toilets. Change or rinse cloths frequently.



**13** Clean the walls around the toilet and polish chrome.



**14** Treat drains with drain maintainer if necessary.



**15** Wet mop with a disinfectant cleaner.



**16** Inspect your work and report any repairs as needed.

= Green Cleaning Process

## Green Cleaning Tips

- Always apply the cleaner in a stream or onto the cloth.
- Use properly diluted products, preferably through a dispensing system.
- Make sure all spray bottles are properly labeled.
- Never mix cleaning products together.
- Periodically machine-scrub restroom floors with a disinfectant.
- Make sure appropriate dwell times for disinfectants are followed.
- Use microfiber cloths when possible, and use color-coded cloths by area.